



BIOLOGICAL
CRYSTALLOGRAPHY

Volume 71 (2015)

Supporting information for article:

Crystallizing the 6S and 8S spliceosomal assembly intermediates: a complex project

Jann-Patrick Pelz, Hermann Schindelin, Katharina van Pee, Jochen Kuper, Caroline Kisker, Kay Diederichs, Utz Fischer and Clemens Grimm

Table S1 Autoindexing results for the 8S dataset with default settings. The selected cell and symmetry (C2, small cell) for the integration run is highlighted.

Lattice character	Bravais lattice	Quality of fit	a	b	c	α	β	γ
31	aP	0.0	71.4	134.4	150.0	63.8	76.3	74.6
44	aP	1.0	71.4	134.5	150.0	108.4	103.7	105.4
27	mC	1.4	259.3	71.4	151.0	90.0	118.0	90.0
39	mC	54.7	259.3	71.4	151.0	90.0	118.0	90.0
30	mC	138.0	134.4	269.3	71.4	82.4	105.4	89.6
37	mC	252.2	291.5	71.4	134.4	105.4	112.9	90.0
43	mI	304.1	134.5	269.3	134.4	94.5	149.2	89.6
35	mP	304.5	134.4	71.4	151.0	90.0	116.9	105.4
41	mC	317.1	269.3	134.5	71.4	105.4	97.7	90.4

Table S2 Autoindexing results for the 8S dataset with setting STRONG_PIXEL= 2 to include weak reflections. The selected cell and symmetry (P₂₁, large cell) for the integration run is highlighted.

Lattice character	Bravais lattice	Quality of fit	a	b	c	α	β	γ
44	aP	0.0	150.0	214.1	356.1	90.0	91.8	103.7
31	aP	0.7	150.0	214.1	356.1	90.0	88.2	76.3
34	mP	37.3	150.0	356.1	214.1	90.0	103.7	91.8
29	mC	100.5	150.0	418.9	356.1	90.7	91.8	83.4
39	mC	117.5	418.9	150.0	356.1	91.8	90.7	83.4
38	oC	118.1	150.0	418.9	356.1	89.3	91.8	96.6
33	mP	169.9	150.0	214.1	356.1	90.0	91.8	103.7
35	mP	205.9	214.1	150.0	356.1	91.8	90.0	103.7
32	oP	206.6	150.0	214.1	356.1	90.0	91.8	103.7
28	mC	299.2	150.0	723.2	214.1	92.8	103.7	79.8

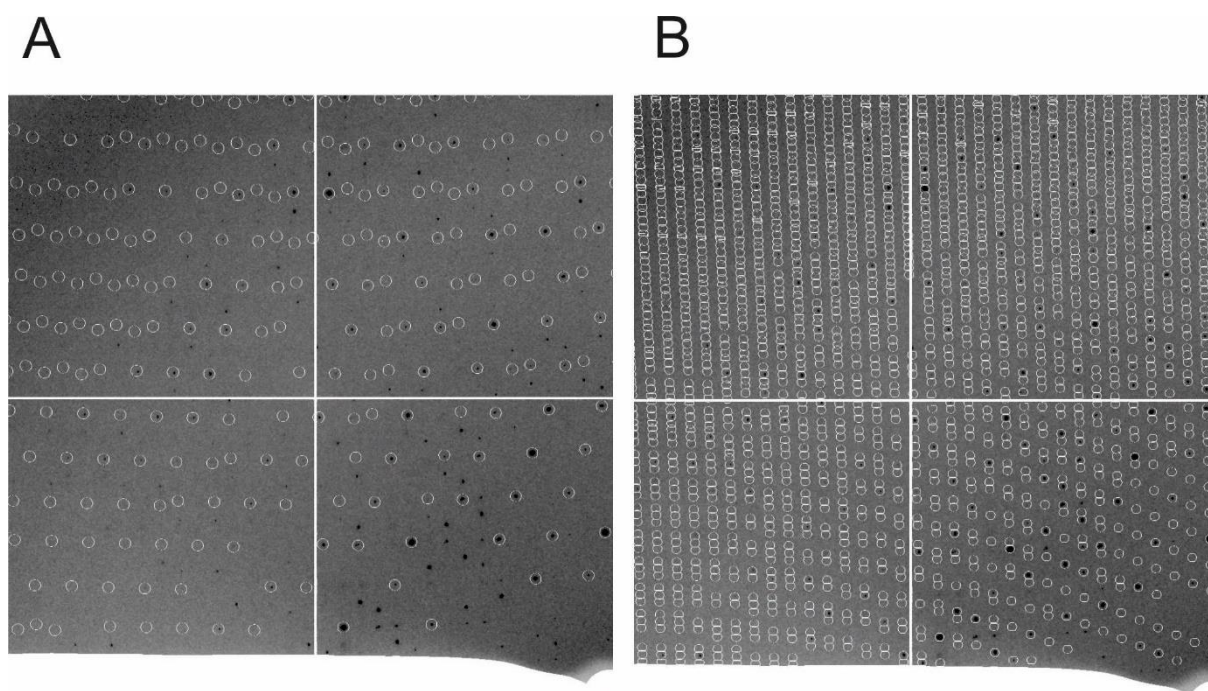
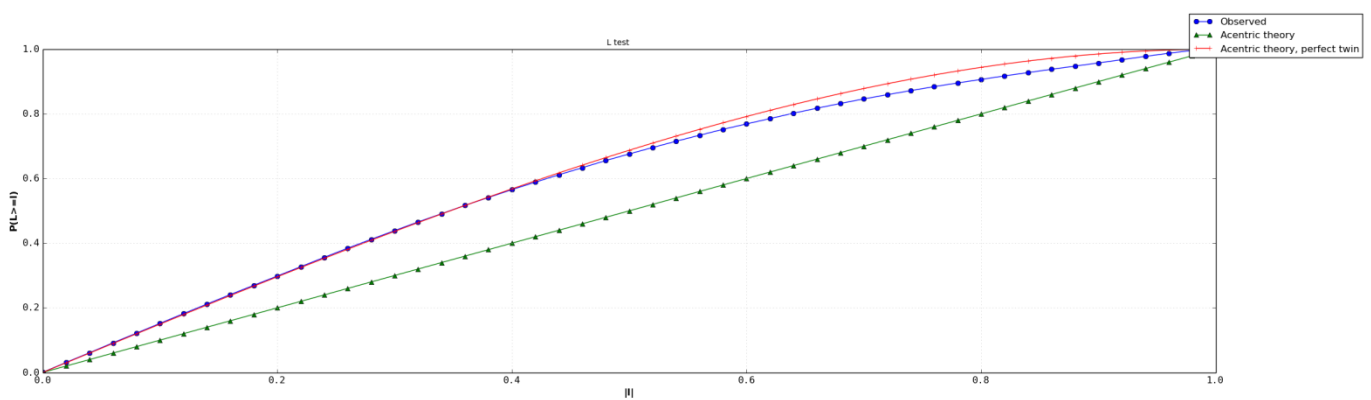


Figure S1 FRAME.cbf images from XDS integration runs for the 8S dataset. Predicted spot positions are indicated by white circles. A – Integration in the C2 space group option. B – Integration in the P2₁ space group option.

A



B

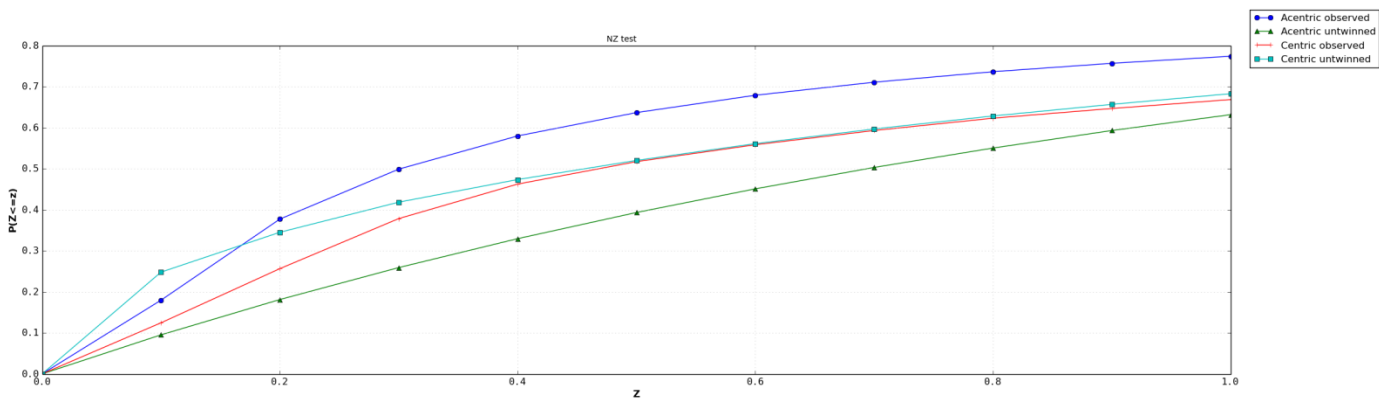


Figure S2 Statistical analysis of the intensity distribution for the 8S dataset (space group $P2_1$, large cell, twinning test with phenix.xtriage). A - L-test. B - NZ-test.